

TAO3192

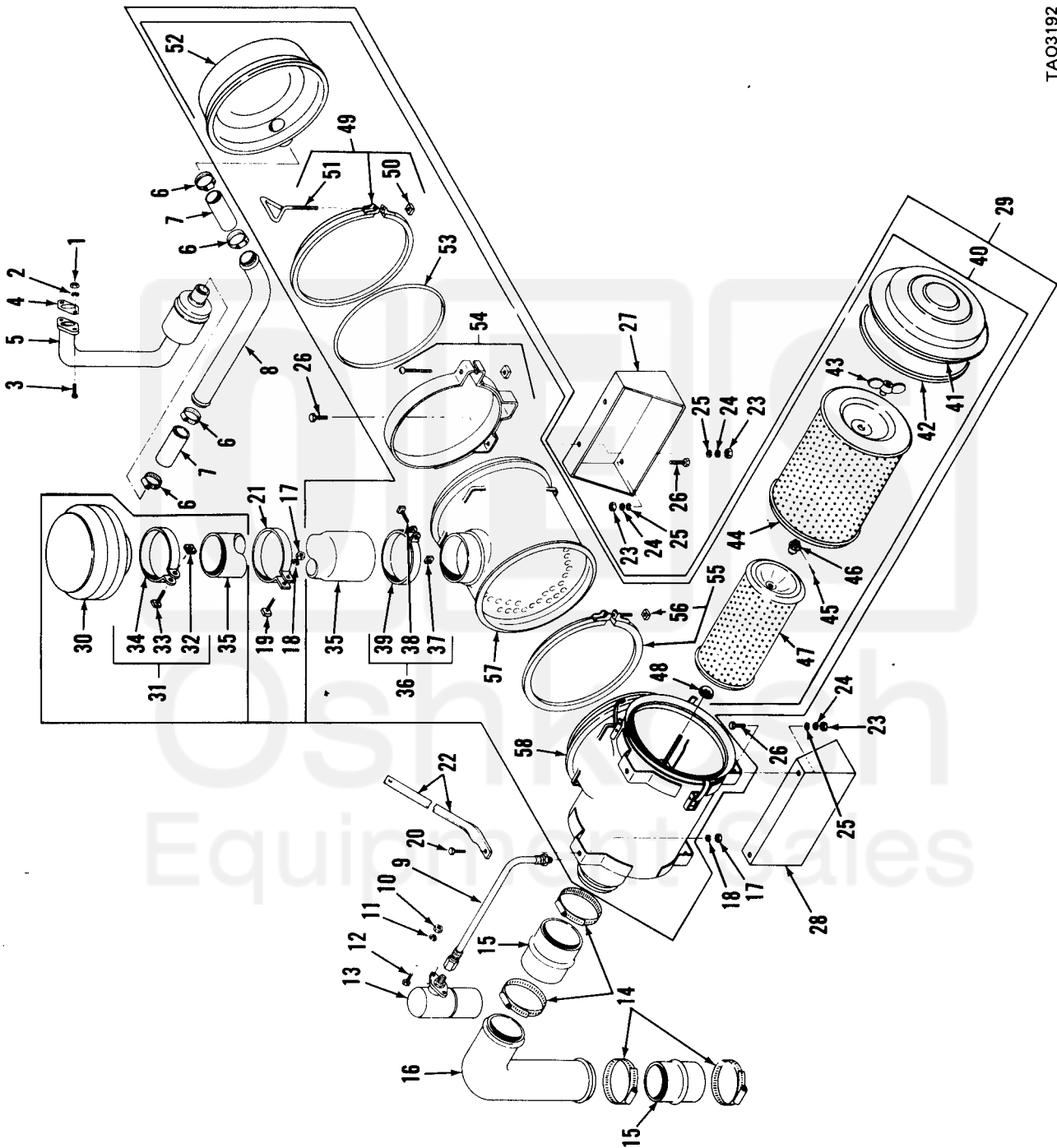


Figure 5. Air intake assembly.

Current part is item (15) on diagram. Available at www.oshkosequipment.com

(1) ILLUSTRATION (a) FIG NO	(2) ITEM (b) NO	(3) NATIONAL (c) STOCK NUMBER	(4) PART (d) PSCM	(5) PART (e) NUMBER	TM10-3930-634-20P (6) DESCRIPTION	(7) UOM	(8) QTY (9) INC (10) UNIT
GROUP 0500 AIR INTAKE ASSEMBLY						USABLE ON CODE	
5	1	PAOZZ 5310-00-732-0558	96906	MS51967-8	NUT, PLAIN, HEXAGON	EA	2
5	2	PAOZZ 5310-00-637-9541	96906	MS35338-46	WASHER, LOCK	EA	2
5	3	PAOZZ 5305-00-688-2111	96906	MS90728-63	SCREW, CAP, HEXAGON H	EA	2
5	4	PAOZZ 5330-01-047-3976	03677	LT2-786	GASKET	EA	1
5	5	PAOZZ 4820-01-063-3884	18265	NYH00-0949	CHECK VALVE ASSEMBL	EA	1
5	6	PAOZZ 4730-00-909-8627	96906	MS35842-13	CLAMP, HOSE	EA	4
5	7	PAOZZ 4720-01-060-7043	03677	LT2-774	HOSE, NONMETALLIC	EA	1
5	8	XDOZZ	18265	F12-7923	TUBE, ANGLE	EA	1
5	9	PAOZZ 4720-00-932-7350	70434	4GAB2MB2UFB018	HOSE ASSEMBLY, NONME	EA	1
5	10	PAOZZ 5310-00-934-9758	96906	MS35649-202	NUT, PLAIN, HEXAGON	EA	2
5	11	PAOZZ 5310-00-045-3296	96906	MS35338-43	WASHER, LOCK	EA	8
5	12	PAOZZ 5305-00-984-6213	96906	MS35206-266	SCREW, MACHINE	EA	2
5	13	PAOZZ 2940-00-998-4696	96906	MS53063-2	INDICATOR, AIR CLEAN	EA	1
5	14	PAOZZ 4730-00-908-6294	96906	MS35842-16	CLAMP, HOSE	EA	4
5	15	PAOZZ 4720-01-046-8844	18265	F10-5609	HOSE, PREFORMED	EA	2
5	16	XDOZZ	18265	F12-7922	TUBE, AIR INTAKE	EA	1
5	17	PAOZZ 5310-00-880-7744	96906	MS51967-5	NUT, PLAIN, HEXAGON	EA	4
5	18	PAOZZ 5310-00-407-9566	96906	MS35338-45	WASHER, LOCK	EA	8
5	19	PAOZZ 5306-00-225-8499	96906	MS90725-34	BOLT, MACHINE	EA	4
5	20	PAOZZ 5306-00-225-8497	96906	MS90725-32	BOLT, MACHINE	EA	2
5	21	XBOZZ	03677	LT2-783	BRACKET	EA	1
5	22	XBOZZ	03677	LT2-782	BRACKET	EA	1
5	23	PAOZZ 5310-00-732-0558	96906	MS51967-8	NUT, PLAIN, HEXAGON	EA	6
5	24	PAOZZ 5310-00-637-9541	96906	MS35338-46	WASHER, LOCK	EA	6
5	25	PAOZZ 5310-00-080-6004	96906	MS27183-14	WASHER, FLAT	EA	4
5	26	PAOZZ 5305-01-010-2362	96906	MS18154-59	SCREW, CAP, HEXAGON H	EA	12
5	27	XBOZZ	03677	LT2-779	SUPPORT	EA	1
5	28	XBOZZ	03677	LT2-780	SUPPORT	EA	1
5	29	XDOZZ	03766	LT2-760	AIRCLNR, INTAKE	EA	1
5	30	PAOZZ 2940-00-107-1192	18265	GAH00-0165	CAP ASSEMBLY, PROTEC	EA	1
5	31	PAOZZ 5340-01-047-6066	18265	P00-4999	CLAMP, LOOP	EA	2
5	32	PAOZZ 5310-00-457-3918	18265	P00-5320	NUT, PLAIN, HEXAGON	EA	1
5	33	PAOZZ 5306-00-225-8500	96906	MS90725-35	BOLT, MACHINE	EA	1
5	34	PAOZZ 5340-01-064-1411	18265	P00-5000	CLAM, SUPPORT	EA	1
5	35	PAOZZ 2805-01-032-2471	18265	NBX00-1747	STACK, EXTENSION, AIR	EA	1
5	36	PAOZZ 5340-01-047-6066	18265	P00-4999	CLAMP, LOOP	EA	1
5	37	PAOZZ 5310-00-457-3918	18265	P00-5320	NUT, PLAIN, HEXAGON	EA	1
5	38	PAOZZ 5306-00-225-8500	96906		BOLT, MACHINE	EA	1
5	39	PAOZZ 5340-01-064-1411	18265	P00-5000	CLAM, SUPPORT	EA	1

Current part is item (15) on diagram. Available at www.oshkosequipment.com